

Nº15

D'Arbly Street, W1





WELCOME

**One of Soho's
most exceptional
buildings restored
as a contemporary
space for a changing
working landscape**

N^o15

D'Arblay Street, W1



**Your own little
part of Soho**

**Available to let
647 - 3,538 sq ft**

No 15 D'Arblay Street has been recently restored to one of Soho's most desirable buildings. The original building has been improved with new air conditioning, showers, and a redesigned terrace on the 4th floor. Flooded with natural light, the offices benefit from windows to the front and rear. Contemporary design is reflected in exposed brick, wood floors and original beams. The offices are available to let as a whole, or on a floor-by-floor basis.

At the centre of London's most exciting district

The City

Canary Wharf

Trafalgar Square

Southbank

Waterloo

London Eye

British Museum

Covent Garden

Tottenham Court Road

Charing Cross

N015

Piccadilly Circus

Carnaby Street

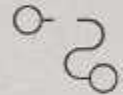
Oxford Street

Regent Street

Oxford Circus



Right in the heart of Soho



By foot

Destinations on your doorstep

- Fitzrovia 3 mins
- Mayfair 5 mins
- Marylebone 8 mins
- Covent Garden 10 mins



By tube

Underground lines? You've got options

- Oxford Circus 6 mins
- Tottenham Court Road 7 mins
- Piccadilly Circus 8 mins
- Bond Street 12 mins

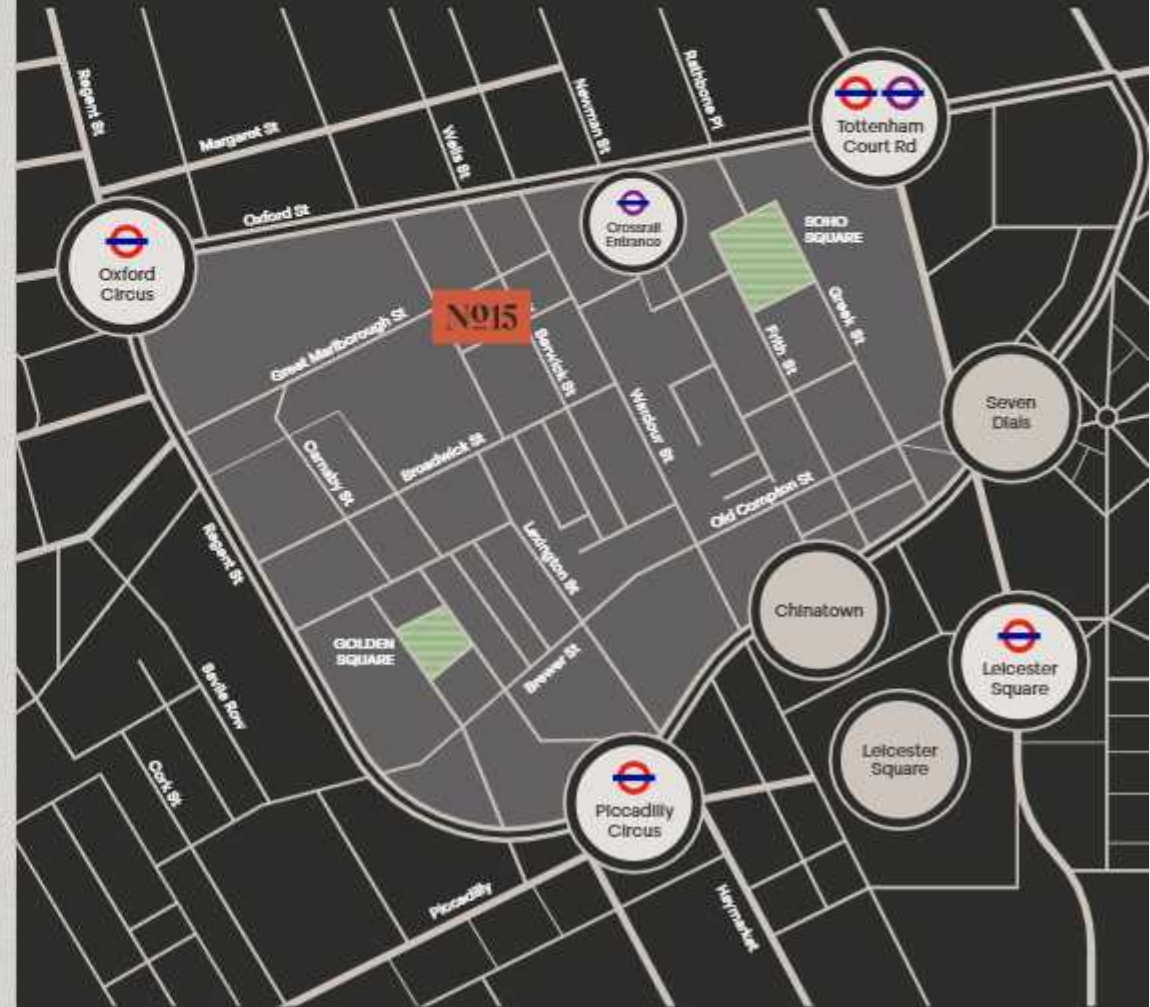


By Crossrail

From Tottenham Court Road to...

- Paddington 5 mins
- Liverpool Street 5 mins
- Canary Wharf 12 mins
- Heathrow T2/T3 28 mins

No 15 D'Arbly Street is well connected with the Central, Victoria, Northern, and Bakerloo underground lines at stations all within a 10 minute walk. Tottenham Court Road station will be served by Crossrail (Elizabeth Line) by mid-2022. The new Dean Street Crossrail station entrance will be only a short walk from D'Arbly Street.



Features



Comprehensively
Refurbished



Restored Original
Features



4th Floor Terrace



Air Conditioning
Heating and Cooling



Openable Windows



Zoom Rooms



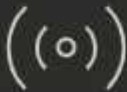
3 Phase Power



EPC Rating C



Showers



1 GB Fibre
Ready



Filled With
Natural Light

Availability

Fourth

647 sq ft | 60 sq m

Terrace

205 sq ft | 19 sq m

Third

858 sq ft | 80 sq m

Second

806 sq ft | 75 sq m

First

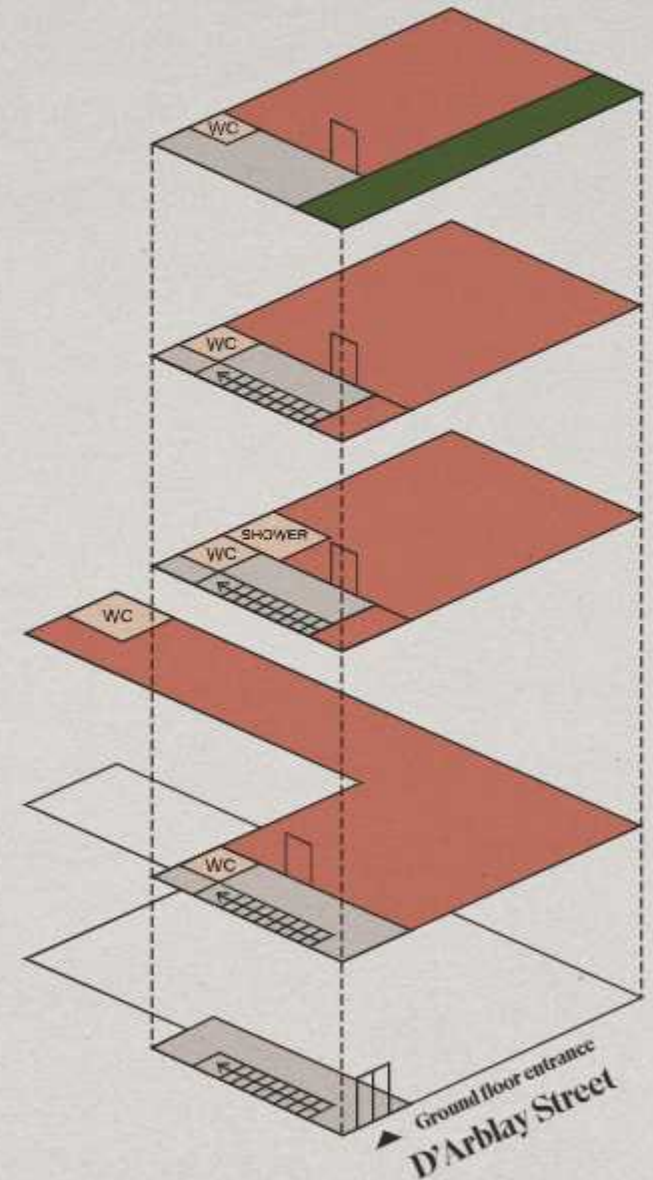
1,227 sq ft | 114 sq m

Total

3,538 sq ft | 329 sq m

KEY

- OFFICE
- FACILITIES
- TERRACE
- CORE





— Filled with light

Third floor

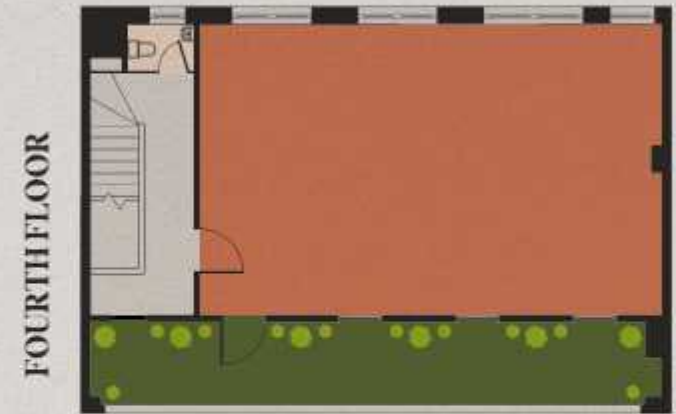
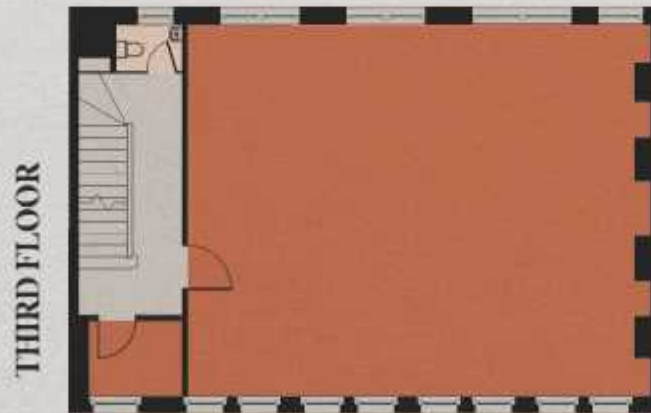
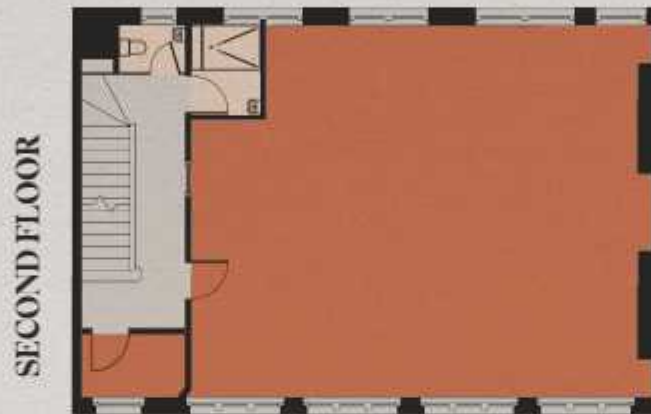


— Space to collaborate

First floor

Floor plans

- KEY**
- OFFICE
 - FACILITIES
 - TERRACE
 - CORE



Fourth

647 sq ft | 60 sq m

Terrace

205 sq ft | 19 sq m

Third

858 sq ft | 80 sq m

Second

806 sq ft | 75 sq m

First

1,227 sq ft | 114 sq m

Total

3,538 sq ft | 329 sq m

Take it all in

This bustling corner of Soho certainly doesn't fall short when it comes to places to eat, drink or shop. No 15 D'Arbly Street is located right in the middle of a diverse set of eateries, cafes, watering holes and shops.

1 — Explore



2 — Kick back



3 — Indulge



4 — Tuck in



— 1

Berwick Street Market

Wonder around Berwick Street Market for some unbeatable lunchtime street food and grab-and-go lunches.

— 3

Creme

Treat yourself to a box of indulgent giant cookie and get your coffee fix at Creme.

— 2

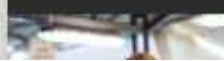
Copita

With an almost daily-changing menu inspired by the seasons, delve into authentic tapas and delicious Spanish wines at Copita.

— 4

Blanchette

Visit French bistro Blanchette, who perfect 'small plates' with a twist on the classics.



Get in touch



RAY WALKER

020 7025 1399

07747 777144

rwalker@monmouthdean.com

OLIVIA STAPLETON

020 7025 8940

07899 667 988

ostapleton@monmouthdean.com

Fabrix

15darblaystreet.london

Monmouth Dean LLP for themselves and for the lessors or vendors of their property whose agents they are, give notice that: (i) These particulars are set out as a general outline only, for the guidance of intended purchasers or lessees, and do not constitute, nor constitute part of, any other offer or contract; (ii) All descriptions, dimensions, references to condition and necessary permission of use and occupation, and other details are given without responsibility, and any intending purchasers and tenants should not rely on them as statements or representative of fact, but must satisfy themselves by inspection or otherwise as to the correctness of each of them; (iii) No person in the employment of Monmouth Dean LLP has any authority to make give any representation or warranty whatever in relation to this property. April 2022.